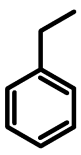
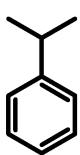


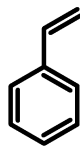
Toluol



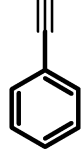
Ethylbenzol



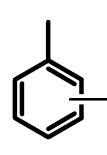
Cumol



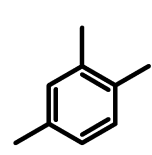
Styrol



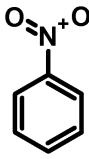
Phenylacetylen



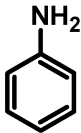
Xylole



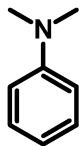
Pseudocumol



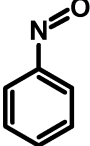
Nitrobenzol



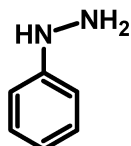
Anilin



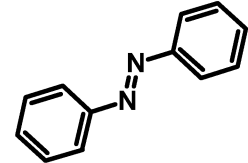
N,N-Dimethylanilin



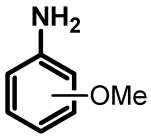
Nitrosobenzol



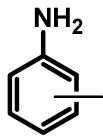
Phenylhydrazin



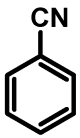
trans-Azobenzol



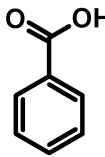
Anisidine



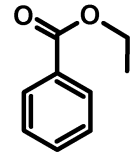
Toluidine



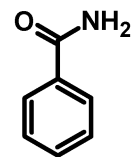
Benzonitril



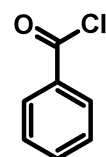
Benzoessäure



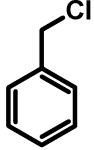
-ethylester



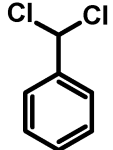
Benzamid



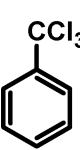
Benzoylchlorid



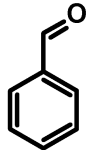
Benzylchlorid



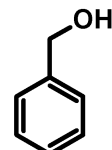
Benzalchlorid



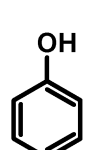
Benzotrichlorid



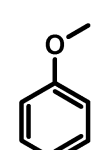
Benzaldehyd



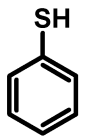
Benzylalkohol



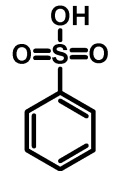
Phenol



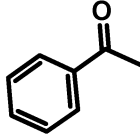
Anisol



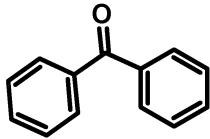
Thiophenol



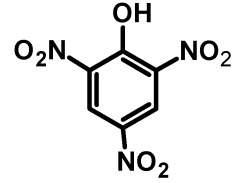
Benzolsulfonsäure



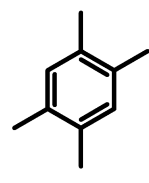
Acetophenon



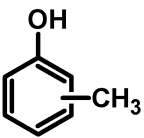
Benzophenon



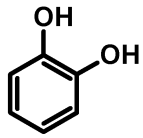
Pikrinsäure



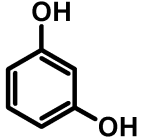
Durol



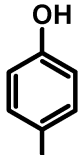
Cresole



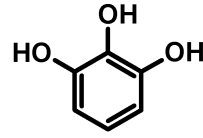
Brenzketechin



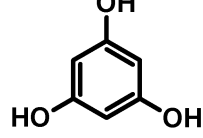
Resorcin



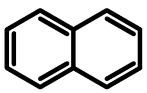
Hydrochinon



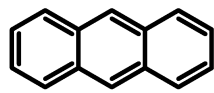
Pyrogallol



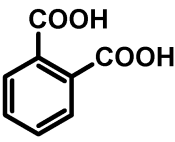
Phloroglycin



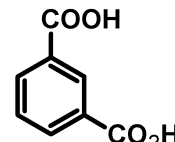
Naphthalin



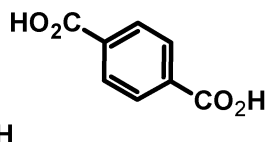
Anthracen



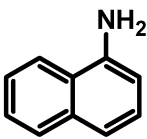
Phthalsäure



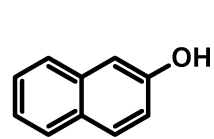
Isophthalsäure



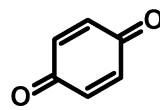
Terephthalsäure



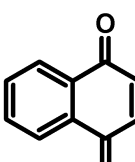
alpha-Naphthylamin



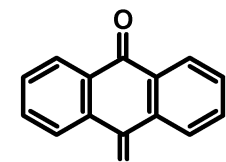
beta-Naphthol



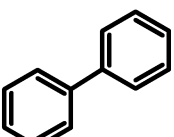
p-Benzochinon



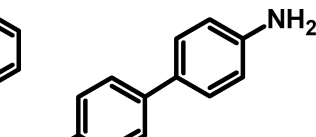
Naphthochinon



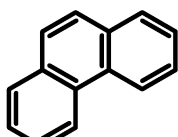
Anthrachinon



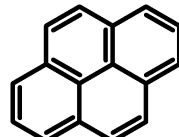
Biphenyl



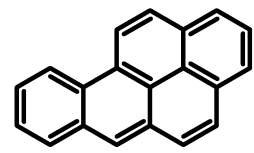
Benzidin



Phenanthren



Pyren



Benzo[a]pyren