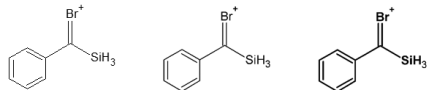


## How to get „nice“ formulas from ChemSketch™

**Problem:** My ChemSketch formula (left) appears pixelated and rough or way to weak...



**Solution:** Quite simple: To obtain the middle or right formula just Export (File>Export) your formula as tiff file with 600 dpi.

Please note the right formula was obtained by marking your formula then double click on it, in the pop-up window *properties* you can now change the *bond* to 1.2 pt (single, double and triple bond) and the *atom* style to bold. You can save this style as well.

Please also note the formulas above does not make much sense...